



## Product Performance Management (PPE) – Starter Package

Cost-efficient entry for your <sup>4</sup>PEP Engineering Change Management

### Firmly control your change process using reliable key performance indicators!

Get the starter package at an affordable and fixed price! We offer an attractive **Product Performance Management (PPE) – Starter Package** for <sup>4</sup>PEP Engineering Change Management. Reach your goal in no time using our starter package with preconfigured graphical analyses.

Say goodbye to using Excel for analysis and to spending time on collecting data.  
Drive decision making based on real-time and future-oriented key performance indicators.

#### Components

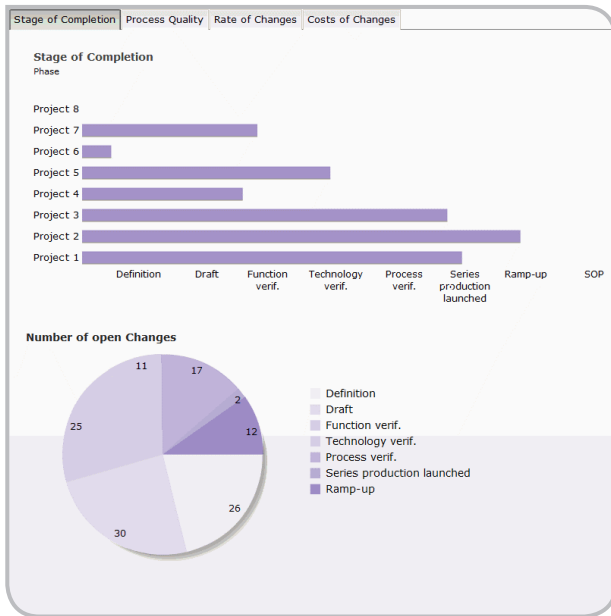
- <sup>4</sup>PEP Connect BI Extractor
- Extractor-Customizing
- Integration into your BI system
- 4-part cockpit with:
  - 9 bar charts
  - 4 pie charts

at fixed price

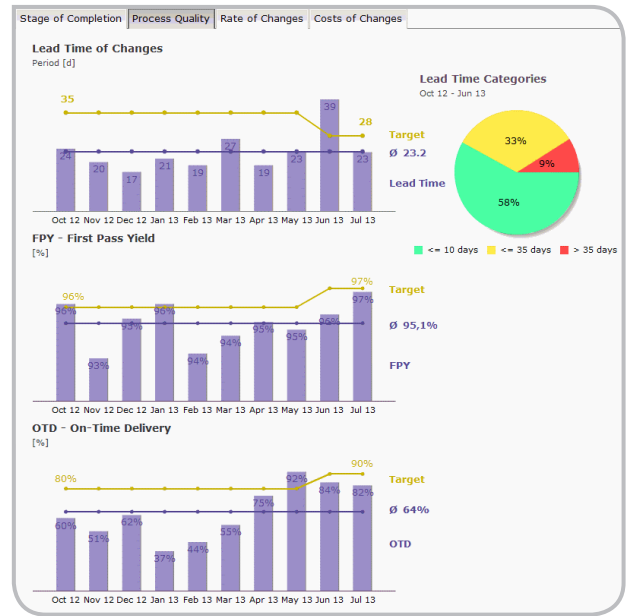
#### Scope of service

- Connection of an SAP® source system (SAP ERP)
- Implementation of the <sup>4</sup>PEP Engineering Change Management PPE scenario
- Loading of all SAP source data associated with the particular scenario into your SAP BI
- Provision of diagrams and cockpits
- Half-day workshop for “test users”

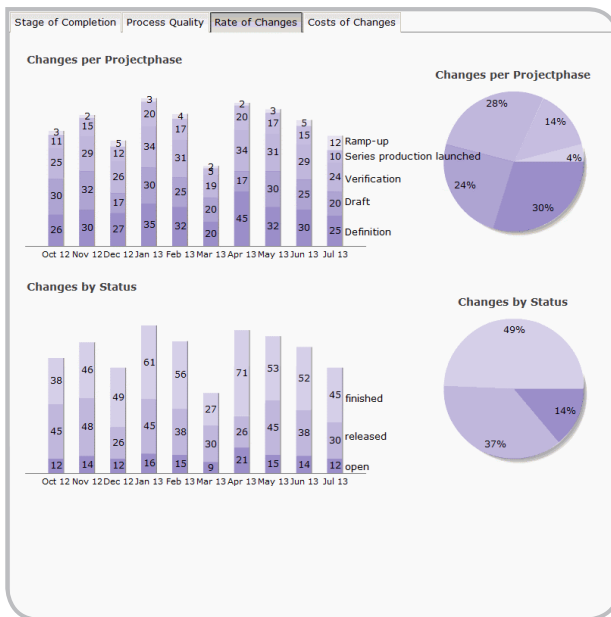
## How will your solution look?



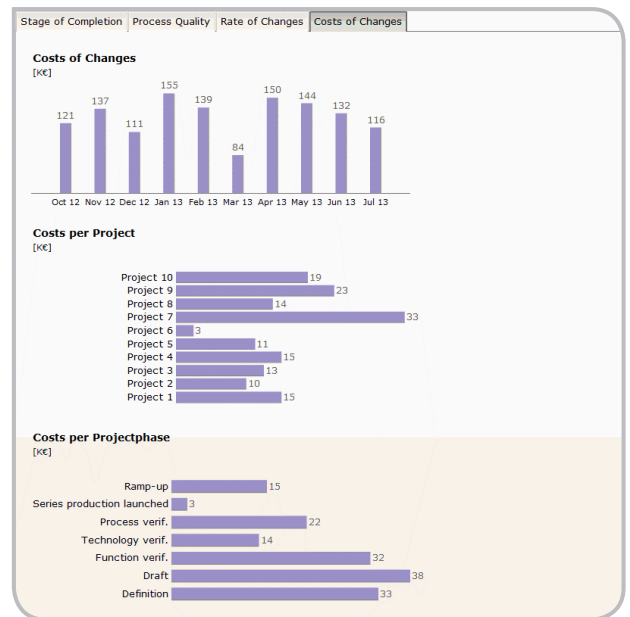
Stage of Completion, Number of open Changes



Lead Times, Process Quality, OTD-On-Time-Delivery



Rate of Changes



Costs of Changes

## Requirements for your Starter Package

- SAP BI System
- SAP Business Objects Dashboards
- 4PEP Engineering Change Management

## What else is there?

You are using alternative 4PEP solutions from ILC? Let's talk about scenarios for other ILC solutions.

Get your individual quote now: [www.ilc-solutions.net/contact](http://www.ilc-solutions.net/contact)



ILC GmbH  
Saarpfalz-Park 7  
66450 Bexbach

Phone +49 (0)6826 189-0  
Fax +49 (0)6826 189-189

E-Mail: [info@ilc-solutions.net](mailto:info@ilc-solutions.net)  
[www.ilc-solutions.net](http://www.ilc-solutions.net)

© ILC GmbH 2015. All rights reserved. The material contained in this document is for information purposes only and is not binding.